



"To Know Christ and to  
Make Him Known"

Volume 35 Issue 2

February 2010

# Hope's Newsletter

## A Message From Pastor Lynn

Lent begins this month. It seems like it was just Christmas - with the baby born in a stable, the shepherds and angels glorifying God, and the magi coming to visit after following the star. Lent begins with ashes on our foreheads, signs of our mortality, and ends at the foot of the cross.

Valentine's Day is also this month, a day on which we show others how much we love them. We have parties, buy too much chocolate (can there ever be too much chocolate?), and search for just the right card. We may buy or send flowers to show our devotion to the one we love. We place phone calls and send emails and text messages to those who are far away. In short, we do what we can to demonstrate our love for them.

Jesus came to earth to demonstrate God's love for us. Jesus lived and loved, taught

and healed, restored life and renewed faith, then was put to death, to prove the depth of God's love for us.

I've had Elizabeth Barrett Browning's poem on my mind lately. Written from her to her beloved Robert, her sonnet expresses God's love for us as well, especially the opening lines. "How do I love thee? Let me count the ways. I love thee to the depth and breadth and height my soul can reach."

God loved/loves us to the depth and breadth and height of the divine being. Perhaps each day this year you will ponder just how much God loves you, and how you can demonstrate your love and devotion to God in return.

In HOPE,  
Pr Lynn

## Inside this issue:

AARP Driver Safety Course	3
Clay Balls	7
Covered Dish Dinner	6
FL Senior Fest	9
Helping Haiti	5
Lenten Drama	2
Long Range Planning	4

### Mailing Address:

P.O. Box 2070  
Dunnellon Florida 34430  
Phone: 352-489-5511  
Fax: 352-489-5222

### Church Email:

Hopeevangelical@bellsouth.net

### Pastor Lynn's Email:

Lmfonfara@bellsouth.net

### Web Page Address:

www.hopelutheranelca.com

### Sunday Sermons

www.hopewards.blogspot.com

## Lenten Dramas



### LENTEN Dramas

Wednesday evening Lenten worship this year will feature a series of chancel dramas called "The People vs Jesus."

Jesus of Nazareth is charged with the crime of fraud, otherwise known as the crime of lying. Specifically, he has been charged with lying about two particular facts. One, that he is the Son of God. And two, that he is the Savior, the Savior from our sins.

A judge, bailiff, prosecuting attorney, and defense attorney conduct the trial. A court reporter takes notes. Five witnesses, people from Jesus' life, are interrogated as they testify to how they knew Jesus and what he did. The congregation is the jury.

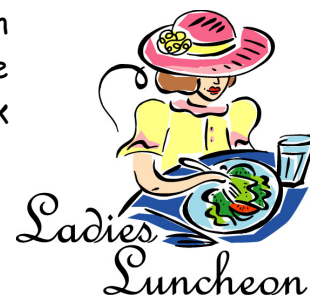
A sign-up sheet is in the narthex. Please consider volunteering to play a role, for all five weeks, or just once, as your interest and schedule permit. As in modern courtrooms, women or men may be judge, attorney, bailiff, or court reporter.

See Pastor Lynn for a copy of the script.

## Hope's Women of the ELCA

February is one of highlights for Hope's Women of the ELCA. We will be hosting an Invitational Luncheon on February 10 at 11 a.m. for the women of St. Timothy Lutheran Church in Crystal River and the women of Good Shepherd Lutheran Church in Hernando. We will not have a business meeting on that day (Wednesday, February 10th). Our

program will be about Life Line. The speaker is Fred Delong. A sign-up sheet will be available to give us an idea of how many will be attending. We look forward to seeing you.



## Spotlight on our Youth

Marissa Penn continued to score soccer goals throughout her first season on her JV team at Crystal River High School. Great season for Marissa!!

Many of our younger children saw snow for the first time in their lives last month. It's

surely something we will all remember for a long time to come!

If you or your child would like to be featured in next month's newsletter, please email Terry Lucente at [terryann17@yahoo.com](mailto:terryann17@yahoo.com) with the latest news you would like to share.



## AARP Driver Safety Course

There is an AARP Driver Safety course scheduled for March 3 and 4 starting at 9 a.m. each day. Fee is \$12 for AARP members and \$14 for non-members.

The course is approved in Florida to meet the Florida Department of Highway Safety and Motor Vehicles requirements for a Senior

Citizen Discount Insurance course.

The course deals with medicine and it's interaction with alcohol, ways to avoid driving impaired, trip planning, scanning the road, right-of-way, reaction time, road signs, school buses, dealing with fatigue and much more.

To register call Bob Dicker at (352)527-2366.

## Esther Circle Bible Study

Esther Circle will meet on Thursday, February 18, 2010 10:30 A.M. in the church parlor to continue our study of the letter from St. Paul to the Romans. "Does God Keep Promises?" St. Paul acknowledges that there is a limit to our human understanding and yet we can maintain our trust in a promising God. Paul declares his belief in God's faithfulness to all the promises God has made. Paul confesses that he, like us, doesn't and can't understand the mystery of God's ways. And Paul laments over

the failure of some people to know that Jesus is God's Messiah, but he never imagines that God will give up on God's beloved people. We know that in our lives "God never gives up on us." What a wonderful promise.

The texts for the lesson: Romans 9: 1-33, 10: 1-21, and 11: 1-36. Copies of the lesson are available in the church office. Please plan to join us on the 18th of February at 10:30 A.M.

## Adult Education Class Schedule

There are more opportunities for Bible study and fellowship.

**Mondays:** Jacob's Journey with Anita O'Donnell from 1 - 3 p.m. in Luther Hall. An enhanced study through the Old Testament

**Wednesday evenings in January:** Freedom for the People of God with Dr. Steven Northsea

beginning at 6 p.m. in the church parlor. A study of Exodus and Jesus' Death and Resurrection

**Third Thursdays:** Esther Circle with Janet Esworthy at 10:30 a.m. in the church parlor

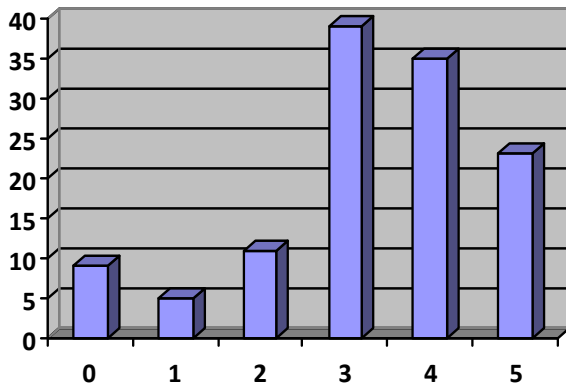
**Sundays:** Adult Forum - Blogging the Bible with Lee Pitre at 9:30 a.m. in room # 1

## Long Range Planning

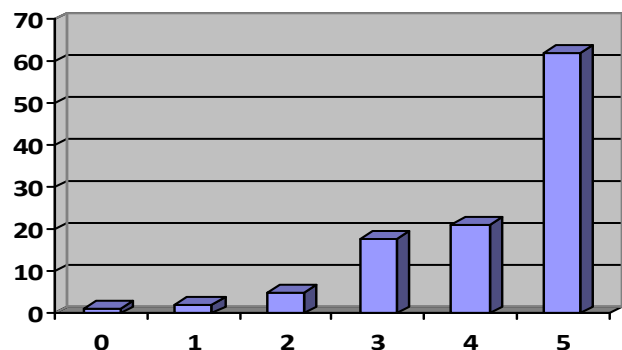
The GPS-4-Hope, or the long range planning committee, has surveyed 123 members of the congregation. At recent meetings the committee tallied the results and agreed to continue making phone calls. The goal is still to talk with everyone that is a member of Hope. Preliminary results of the survey show that members feel a strong loyalty to the congregation of Hope and the outreach

ministries are important in the life of church. The majority of those interviewed concluded that worship services met their worship needs with a three or more. Respondents' answers varied on how active they saw themselves in the church. Suggested goals include: grow membership, continue and expand outreach programs, expand youth programs and Sunday School and develop social activities.

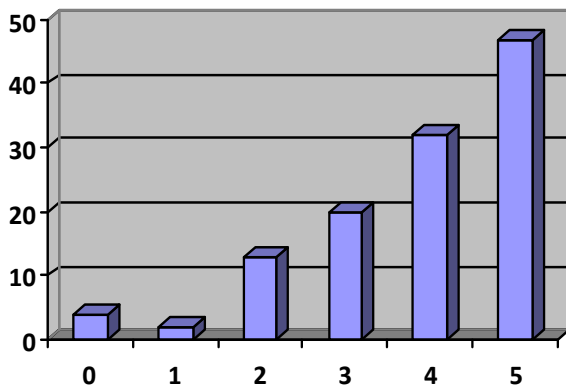
1. How well do worship services meet your spiritual needs?



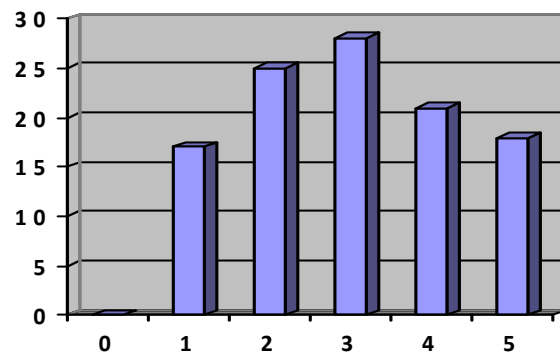
3. How much loyalty do you feel toward the congregation of Hope?



2. How important are the outreach ministries Hope is involved with, such as First Saturday, Angel Food ministries, healing services, grief support classes in the life of the church?



4. Beyond Sunday worship how involved do you see yourself in the life of the church?



---

## The Piecemakers Dedicate Quilts and Parish Projects

This is the time of year when all of the finished projects are transported to our sister church in Tampa for the in-gathering across Florida. The tractor trailer will sweep across the state picking up boxes headed for the warehouse in Maryland. The need is even greater since many of these items will be headed to Haiti.

Our gifts of quilts, sewing kits, health kits, layettes, and soap will be dedicated on Sunday, February 7 at both services. Communion will be distributed by intinction, but please admire the quilts draped across the altar rail and feel free to touch them as you commune. Two of the quilts will be held for the drawing during the Women of the ELCA's Covered Dish on Saturday, February 20. The money raised will assist the

Piecemakers to continue assembling more quilts for Lutheran World Relief.

Come to Luther Hall on Wednesday, February 17 and 24 at 9:30 a.m. to tie quilts. Stay for the imposition of ashes at 12 noon on February 17.

Thank you to everyone who cleaned closets and kept an eye out at yard sales for good sheets to use (cotton or cotton blend).

If you would prefer to work at home, there are kits to sew and fabric to cut. Guidelines to sew the tops are available with the kits. This group also assembles relief kits. Items for health kits and layettes are ready to be blessed in February, also. Lutheran World Relief is in dire need of health kits.

## Helping Haiti

Thrivent Financial for Lutherans members who want to make a financial contribution to support disaster response efforts in Haiti can have their donations to one of four Lutheran relief agencies multiplied by the fraternal benefit society.

To participate, visit [www.thrivent.com/helpinghaiti](http://www.thrivent.com/helpinghaiti) and make a contribution to one of the following: Lutheran World Relief or ELCA Disaster Response

Thrivent Financial will add \$1 to every \$2 its members donate, up to a total Thrivent

Financial contribution of \$1 million. That means a potential of \$3 million or more to support relief efforts: \$2 million + from its members and \$1 million added by Thrivent Financial.

Donations will be accepted through March 31, 2010. Thrivent Financial will add a maximum of up to \$250 per member donation.

For questions or alternative ways to donate through this program, please call 800-236-3736. When promoted, say "directory" and enter ext. 83003.

---

## Covered Dish Dinner for the Piecemakers

Hope's Women of the ELCA will host a covered dish dinner at 4:30 p.m. on Saturday, February 20, 2010 in Luther Hall. A free will offering will be supplemented with funds from Thrivent Financial for Lutherans through the Care Abounds in Communities program. If \$450 is raised, Thrivent Financial will give \$150 to benefit the Quilting Group now known as the "Piecemakers". There is no funding for material projects in Hope's 2010 Ministry Spending Plan. One roll of batting costs nearly \$100 and generates about 25 quilts.

Each person is asked to please bring a wrapped gift to be auctioned. You surely have "white elephants" in your home to wrap up; or be creative since no one will know what it is until after they bid on the item. A live auction should be lots of fun!

## Evangelism Committee

The Evangelism Committee (including Stewardship which was combined into Evangelism by the council) **will meet at 10:30 a.m. on the third Monday of each month in 2010** in the church parlor.

The committee consists of Carol D'Auria, Connie DeTuerk-Telfer, Pastor Lynn, Sue Hovis, Victor Kahler, Steve Northsea and Lempi Tervo.



Two quilts will be selected from those on display, dedicated earlier in the month, for a drawing at the dinner. If you purchase tickets for the drawing this money can not be included as part of the funds supplemented by Thrivent Financial.

Please give generously because the need is so great. Be sure to sign in as you enter and indicate if you are a member of Thrivent Financial on the attendance form. Checks should be made payable to Citrus Co. Chapter of Thrivent Financial since all funds raised (except those from the drawing) will be processed through the Chapter account. Any monetary gifts can be directed to Mary Ellen Wagner, treasurer of Hope's unit.

Anyone willing to join the committee is so very welcome.

The committee elected Steve Northsea as the chairperson at their first meeting in January.

The committee will discuss present and future outreach activities to grow the church.



---

## Known Birthdays and Anniversaries

### February Birthdays

- 1 Margaret DeWalt
- 3 Kevin Towne
- 5 Harold Skidmore  
June Towner
- 6 Lynn Fonfara  
Beth Penn
- 8 Manley Benmark
- 9 Andy Hooper  
Ethan Hooper
- 10 Clayton Stetson



### Anniversaries

- 14 Edith Regan
- 15 Marie Burd
- 16 Constance DeTuerk-Telfer
- 20 Donna Powell
- 23 Joan Klotz
- 24 Lynn McGuinness
- 28 Norma Engle  
Ruth Todd

### February Anniversaries

- 15 Pete & Donna Powell (10)

### CLAY BALLS

A man was exploring caves by the Seashore. In one of the caves he found a canvas bag with a bunch of hardened clay balls. It was like someone had rolled clay balls and left them out in the sun to bake. They didn't look like much, but they intrigued the man, so he took the bag out of the cave with him. As he strolled along the beach, he would throw the clay balls one at a time out into the ocean as far as he could.

He thought little about it, until he dropped one of the clay balls and it cracked open on a rock. Inside was a beautiful, precious stone! Excited, the man started breaking open the remaining clay balls. Each contained a similar treasure. He found thousands of dollars worth of jewels in the 20 or so clay balls he had left. Then it struck him. He had been on the beach a long time. He had thrown maybe 50 or 60 of the clay balls with their hidden treasure into the ocean waves. Instead of thousands of dollars in treasure, he could have taken home tens of thousands, but he had just thrown it away!

It's like that with people. We look at someone, maybe even ourselves, and we see the

external clay vessel. It doesn't look like much from the outside. It isn't always beautiful or sparkling, so we discount it. We see that person as less important than someone more beautiful or stylish or well known or wealthy. But we have not taken the time to find the treasure hidden inside that person. There is a treasure in each and every one of us. If we take the time to get to know that person, and if we ask God to show us that person the way He sees them, then the clay begins to peel away and the brilliant gem begins to shine forth.

May we not come to the end of our lives and find out that we have thrown away a fortune in friendships because the gems were hidden in bits of clay. May we see the people in our world as God sees them. I am so blessed by the gems of friendship I have with you. Thank you for looking beyond my clay vessel.

Appreciate Every single thing you have, especially your friends! Life is too short and friends are too few!

Do not ask the Lord to Guide your Footsteps if you are not willing to MOVE your Feet.

## Those Assisting in Worship for February

### **Communion Assistants and Acolytes**

#### **8 a.m.**

7 - Lynn Polack/Renate Wilms  
14 - Casey Gaylaro/Lila Preszler  
21 - James Hovis/Anthony Diaz  
28 - Anita O'Donnell/Brenna Towne

#### **10:45 a.m.**

Norma Engle/Jackie Dean  
Mary Peterson/Richard Wagner  
Bud Engle/Norma Engle  
Mary Peterson/Randy Wagner

### **Altar Guild**

Diane Kahler/Doris Boeson

### **Assisting Ministers**

8 a.m. - Renate Wilms-Rovin  
Ted Polack  
10:45 - Steve Northsea

### **Greeters**

8 a.m. - Marcia Meier/Anita O'Donnell  
10:45 a.m. - Janice Pitre/Helen Van Horn

### **Guest Greeter**

8 a.m. - Casey Gaylaro  
10:45 - June Towner

### **Nursery**

#### **8 a.m.**

7 - Edith Regan  
14 - Ruth Moheit  
21 - Marcia Meier  
28 - Terry Lucente

#### **10:45 a.m.**

Janice Pitre  
Terry Lucente  
Judy Thomason  
Janice Pitre

### **Lay Readers**

#### **8 a.m.**

7 - Anita O'Donnell  
14 - Frank Vilardi  
21 - Monika Seeger  
28 - Eloise Olsen

#### **10:45 a.m.**

Irene Drew  
Dee Forsyth  
Judy Thomason  
Norma Engle

### **Ushers for the Month**

8 a.m.

10:45



Sun	Mon	Tue	Wed	Thu	Fri	Sat
	<b>1</b> 8:30 Men's Club 1:00 Jacobs Journey 6:30 Boy Scouts	<b>2</b> 6:00 Girl Scouts	<b>3</b> 9:30 WELCA Bd Mtg 1:00 Art Group 2:00 Healing Service 6:00 Youth Gathering 6:00 Bible Study 7:00 Ex Bd Mtg	<b>4</b> 6:30 Cub Scouts 7:00 Choir Reh.	<b>5</b>	<b>6</b> 4:00 to 7:00 Boy Scout Spaghetti Dinner
<b>7</b> Communion Quilt Dedication Scout Sunday 8 & 10:45 Worship 9:30 Sunday School 9:30 Confirmation 9 & 12 Fellowship	<b>8</b> 1:00 Jacobs Journey 6:30 Boy Scouts	<b>9</b> 6:00 Girl Scouts	<b>10</b> 11:00 WELCA Luncheon 6:00 Bible Study 7:00 Council Mtg	<b>11</b> 6:30 Cub Scouts 7:00 Choir Reh.	<b>12</b>	<b>13</b>
<b>14</b> Communion 8 & 10:45 Worship 9:30 Sunday School 9:30 Confirmation 9 & 12 Fellowship	<b>15</b> 10:30 Evangelism 1:00 Jacobs Journey 6:30 Boy Scouts	<b>16</b> 1:00 Altar Guild 6:00 Girl Scouts	<b>17</b> Ash Wednesday 9:30 Quilting Group 12:00 Service 1:00 Art Group 7:00 Service	<b>18</b> 10:30 Esther Circle 6:30 Cub Scouts 7:00 Choir Reh.	<b>19</b>	<b>20</b> 4:30 W/ELCA Pot Luck
<b>21</b> Communion 8:15 Sunday School 8:15 Confirmation 9:30 Worship 10:30 Fellowship 10:45 Christian Ed	<b>22</b> 1:00 Jacobs Journey 6:30 Boy Scouts	<b>23</b> 6:00 Girl Scouts	<b>24</b> 9:30 Quilting Group 12:00 Lent Service 1:00 Art Group 5:30 Soup Supper 7:00 Service	<b>25</b> 6:30 Cub Scouts 7:00 Choir Reh.	<b>26</b>	<b>27</b>
<b>28</b> Communion 8:15 Sunday School 8:15 Confirmation 9:30 Worship 10:30 Fellowship						